

6

5

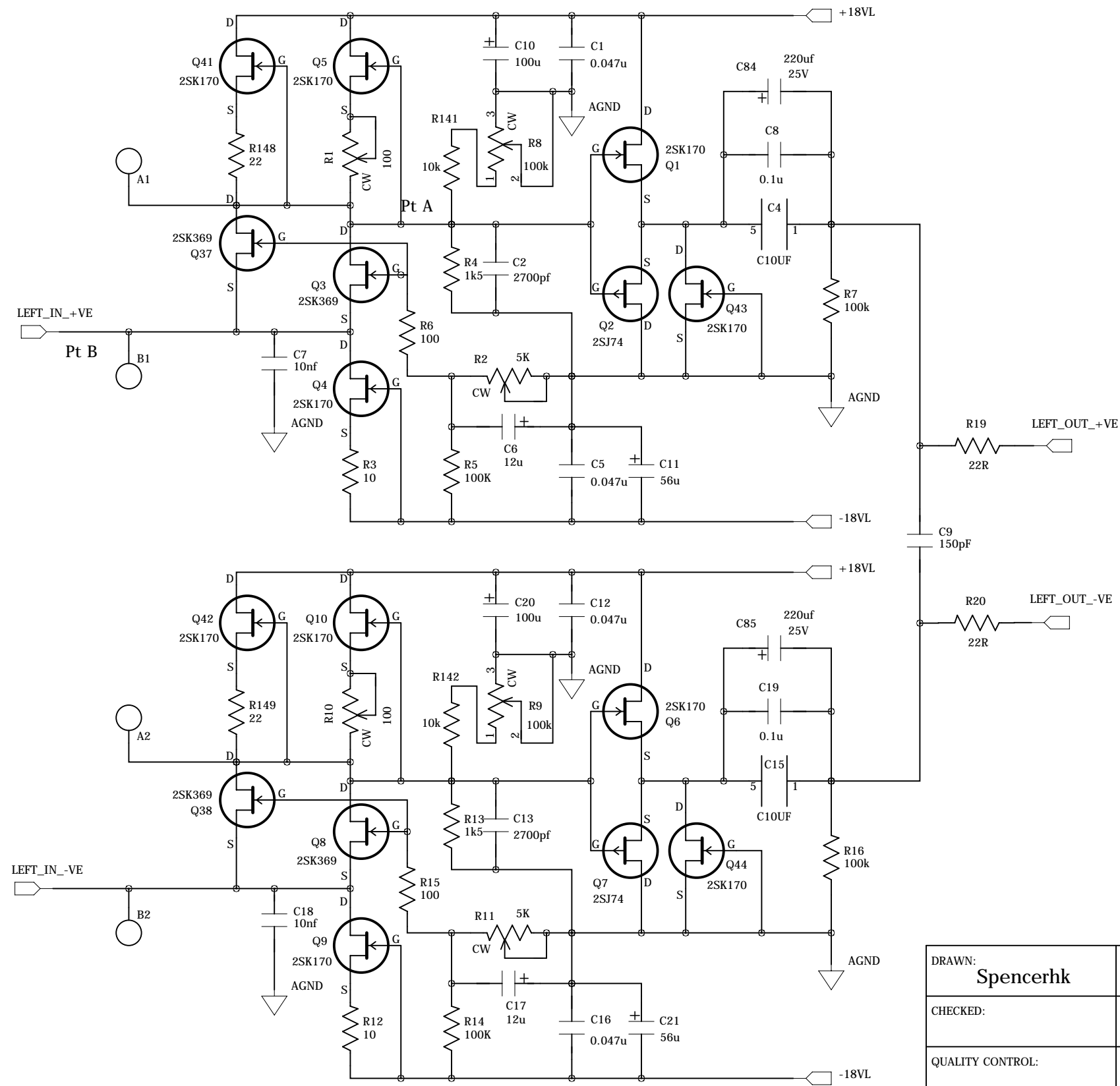
4

3

2

1

REVISION RECORD			
LTR	ECO NO:	APPROVED:	DATE:



Notes:

- Use either Q1/Q2 or Q1/Q43, do not use both!
- Use either Q6/Q7 or Q6/Q44, do not use both!
- Q1, Q2, Q6, Q7, or Q43, Q44 use Idss 8~10 mA
- Q3/Q37 & Q8/Q38 use Idss >=10mA
- Q5/Q41 & Q10/Q42 use Idss total >=15mA
- Q4 & Q9 use Idss 9mA or above
- R8 & R9 to trim output to same ac level, optional
- R1 & R10 to adjust Pt A to half of +Ve supply voltage 8.5 to 9V
- R2 & R11 to adjust Pt B (input) to 0Vdc +/-5mV
- R4 & R13 1.5k use best sound resistor; C2 & C13 use silver mica
- All capacitors min 35V dc
- C84 and C85 use Muse BP capacitor; use either 10u film or BP cap

COMPANY:				DIY FUN							
TITLE:								Jfet IV Left Channel			
CODE:		SIZE:		DRAWING NO:		REV:					
		B				1					
SCALE:				Total 10 pages		SHEET: OF					
						1					

DRAWN:	DATED:
Spencerhk	15/4/2009
CHECKED:	DATED:
QUALITY CONTROL:	DATED:
RELEASED:	DATED:

D

C

B

A

D

C

B

A

6

5

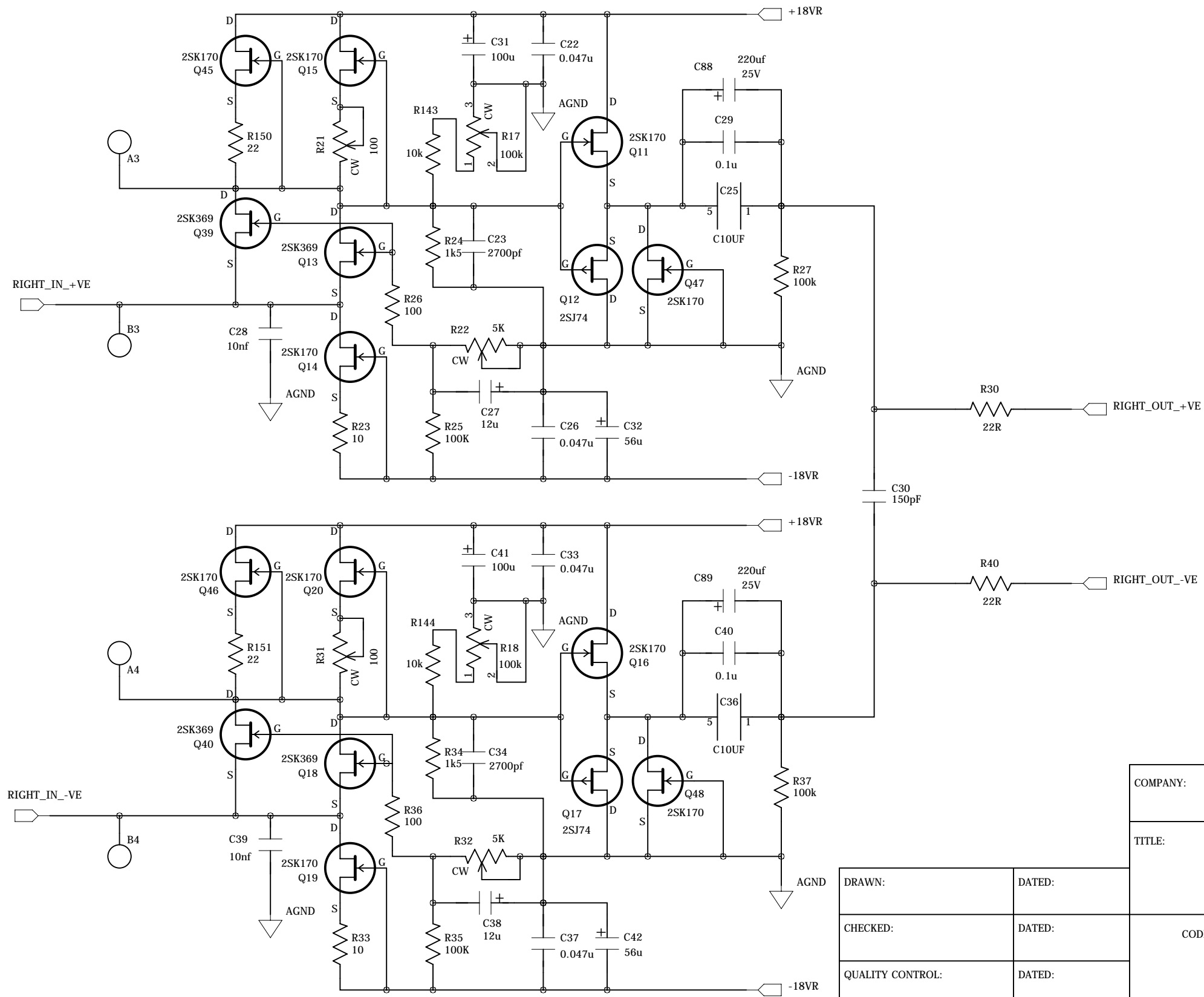
4

3

2

1

REVISION RECORD			
LTR	ECO NO:	APPROVED:	DATE:



Same notes as in Left Channel Jfet IV

COMPANY:			
TITLE: Jfet IV Right Channel			
CODE:	SIZE: B	DRAWING NO:	REV: A
SCALE:		SHEET: OF 2	

DRAWN:	DATED:
CHECKED:	DATED:
QUALITY CONTROL:	DATED:
RELEASED:	DATED:

D

C

B

A

D

C

B

A

6

5

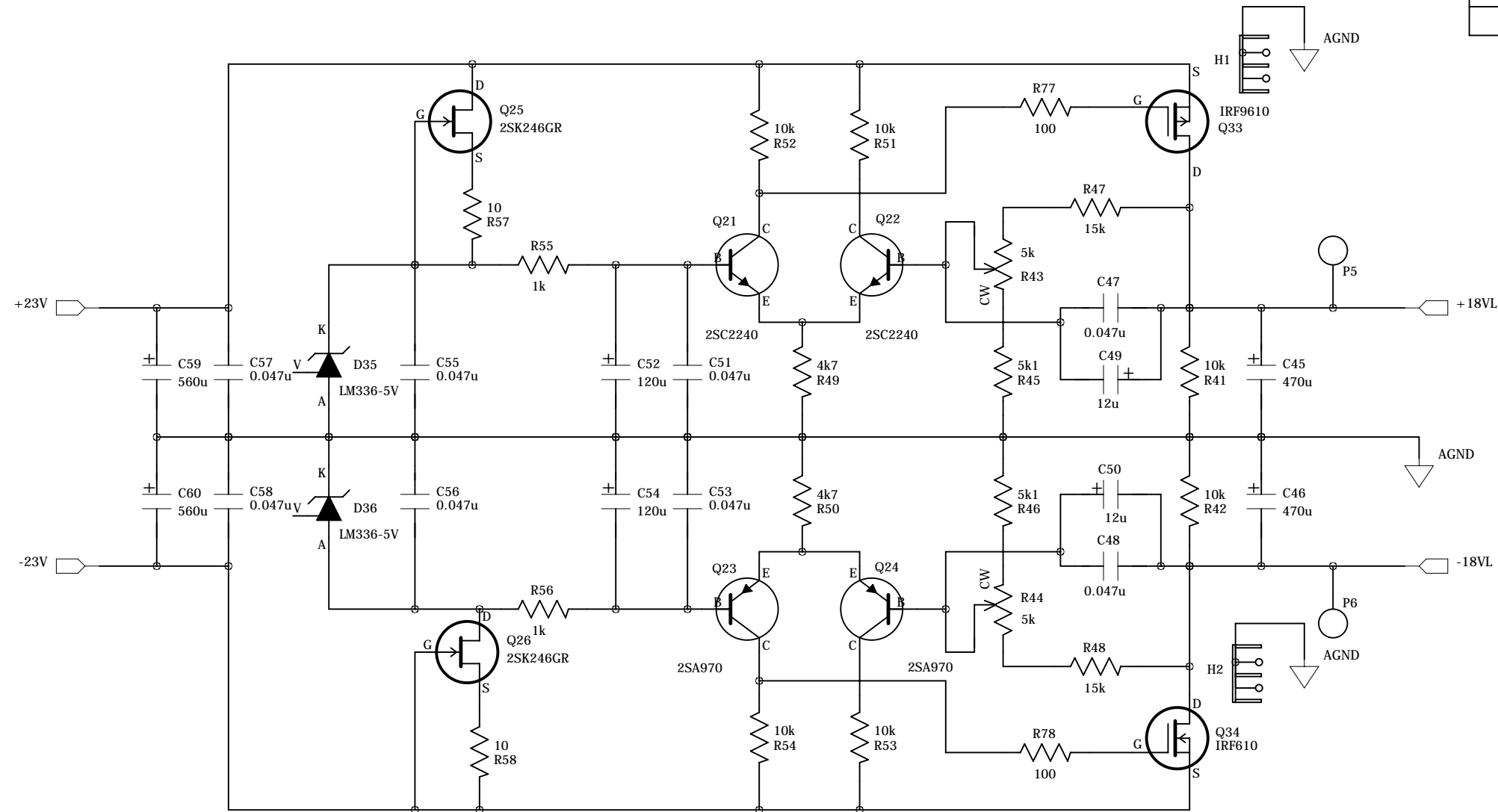
4

3

2

1

REVISION RECORD			
LTR	ECO NO:	APPROVED:	DATE:



Notes:

Q25 & Q26 use Idss about 3mA, GR grade

R43 & R44 to adjust regulator output voltage +/- 18V within 0.1V

R47 & R48: Higher value give higher regulated voltage and vice verse

All capacitors min 35V dc; larger capacitor value is welcome provided size can fit on board

COMPANY:

TITLE:

REGULATOR LEFT JFET IV

DRAWN:	DATED:
CHECKED:	DATED:
QUALITY CONTROL:	DATED:
RELEASED:	DATED:

CODE:	SIZE:	DRAWING NO:	REV:
SCALE:			SHEET: OF 3

6

5

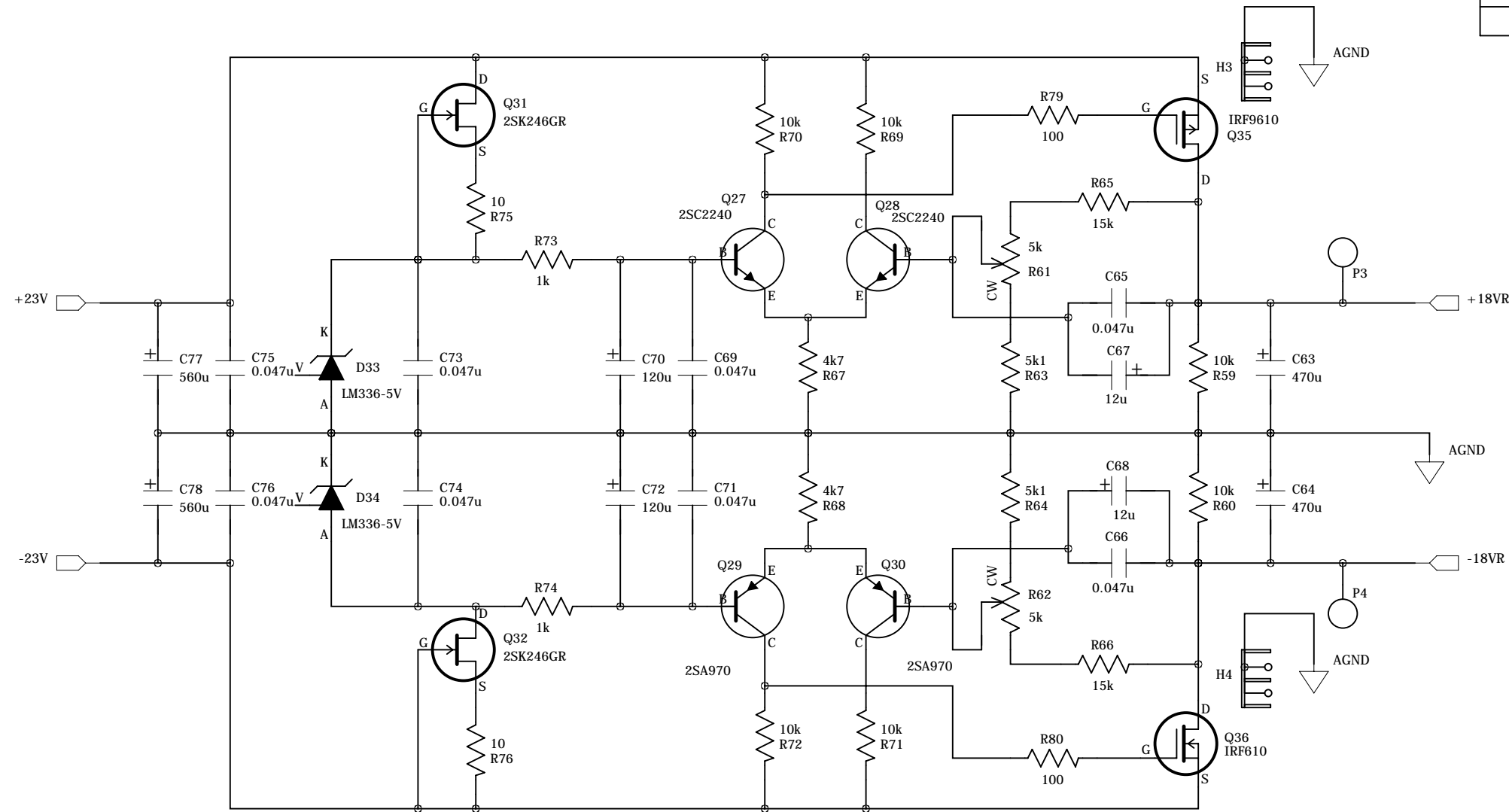
4

3

2

1

REVISION RECORD			
LTR	ECO NO:	APPROVED:	DATE:



Same notes as in Left Channel Regulator

COMPANY:

TITLE:
REGULATOR RIGHT JFET IV

DRAWN:	DATED:
CHECKED:	DATED:
QUALITY CONTROL:	DATED:
RELEASED:	DATED:

CODE:	SIZE:	DRAWING NO:	REV:
-------	-------	-------------	------

SCALE: SHEET: OF 4

6

5

4

3

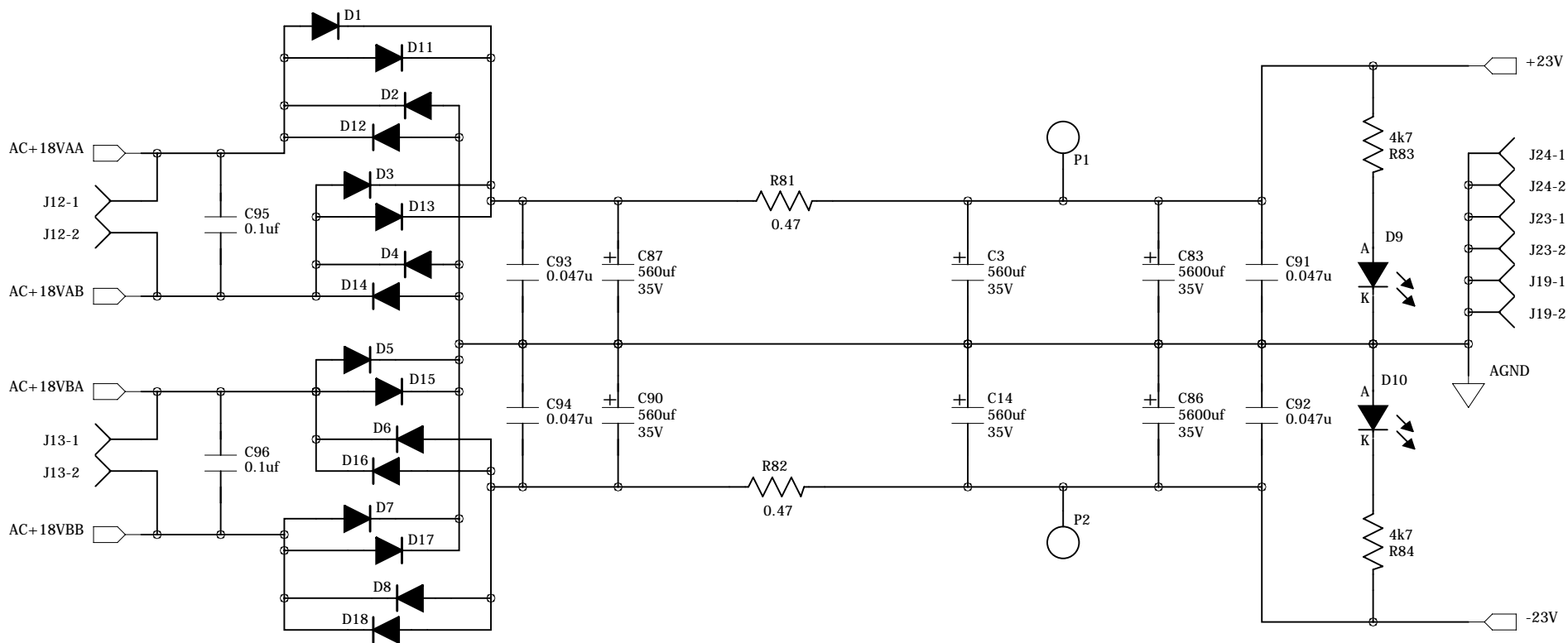
2

1

REVISION RECORD			
LTR	ECO NO:	APPROVED:	DATE:

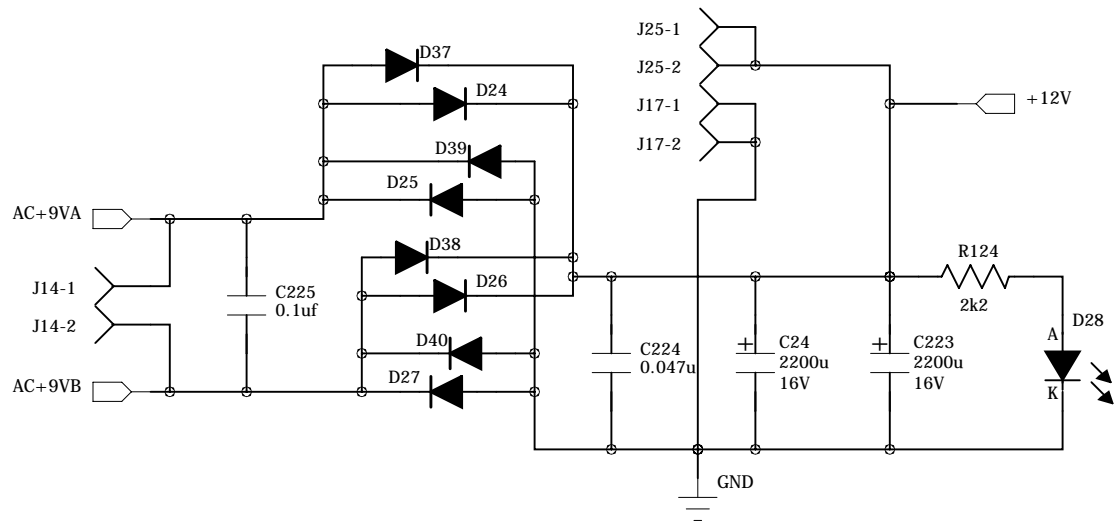
D

D



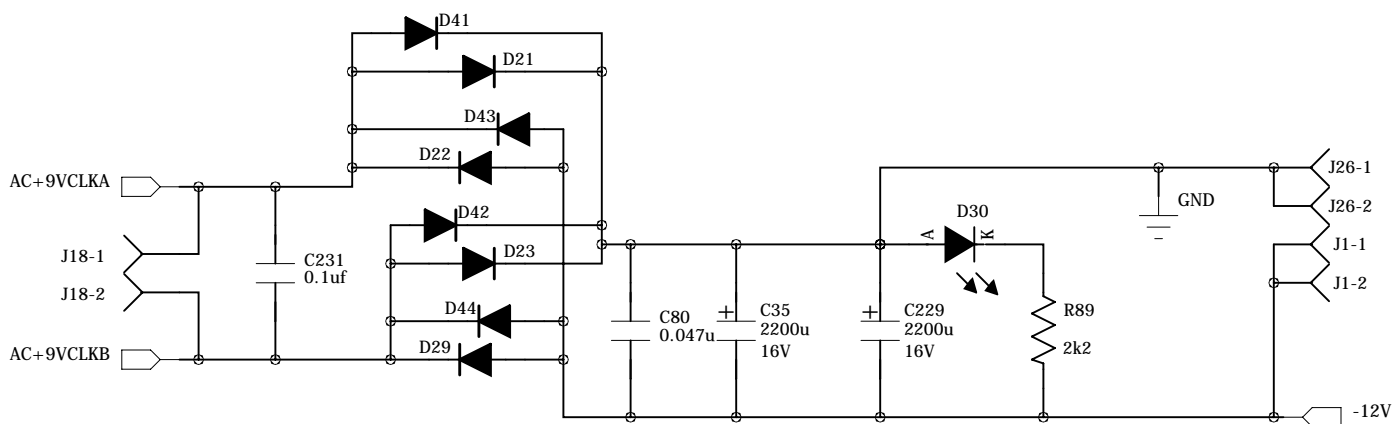
C

C



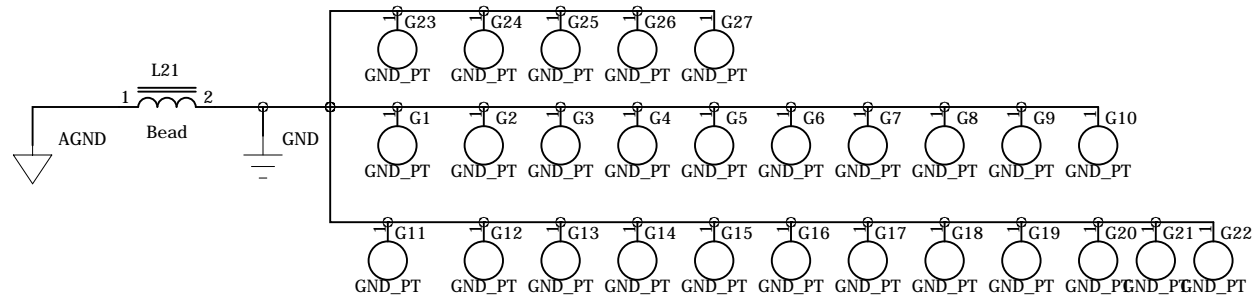
B

B



A

A



COMPANY:

TITLE:

POWER SUPPLY

DRAWN:	DATED:
CHECKED:	DATED:
QUALITY CONTROL:	DATED:
RELEASED:	DATED:

CODE:	SIZE:	DRAWING NO:	REV:
-------	-------	-------------	------

6 5 4 3 2 1

REVISION RECORD			
LTR	ECO NO:	APPROVED:	DATE:

D

D

C

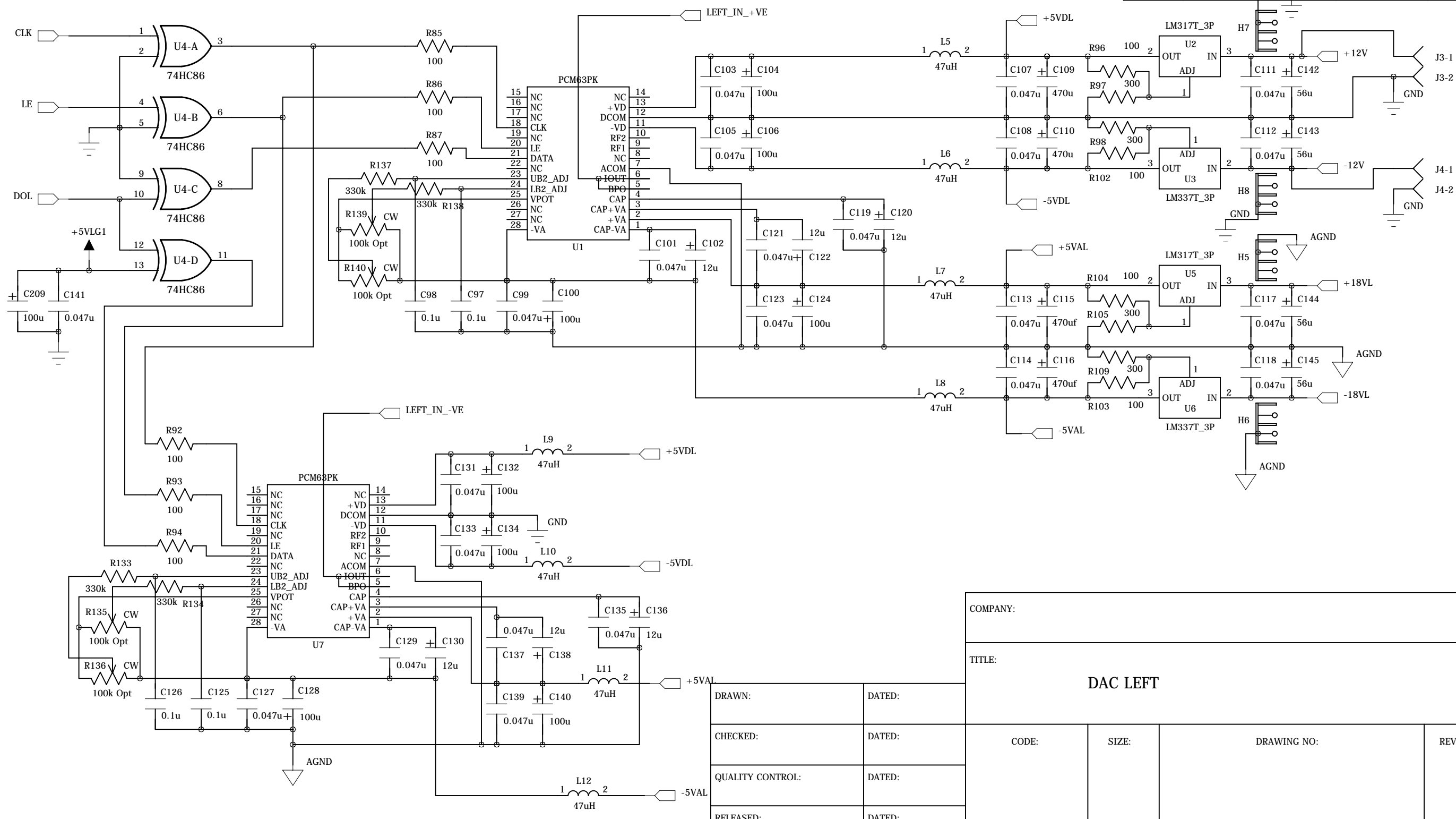
C

B

B

A

A



COMPANY:			
TITLE: DAC LEFT			
CODE:	SIZE:	DRAWING NO:	REV:
SCALE:		SHEET: OF 5	

DRAWN:	DATED:
CHECKED:	DATED:
QUALITY CONTROL:	DATED:
RELEASED:	DATED:

6 5 4 3 2 1

REVISION RECORD			
LTR	ECO NO:	APPROVED:	DATE:

D

D

C

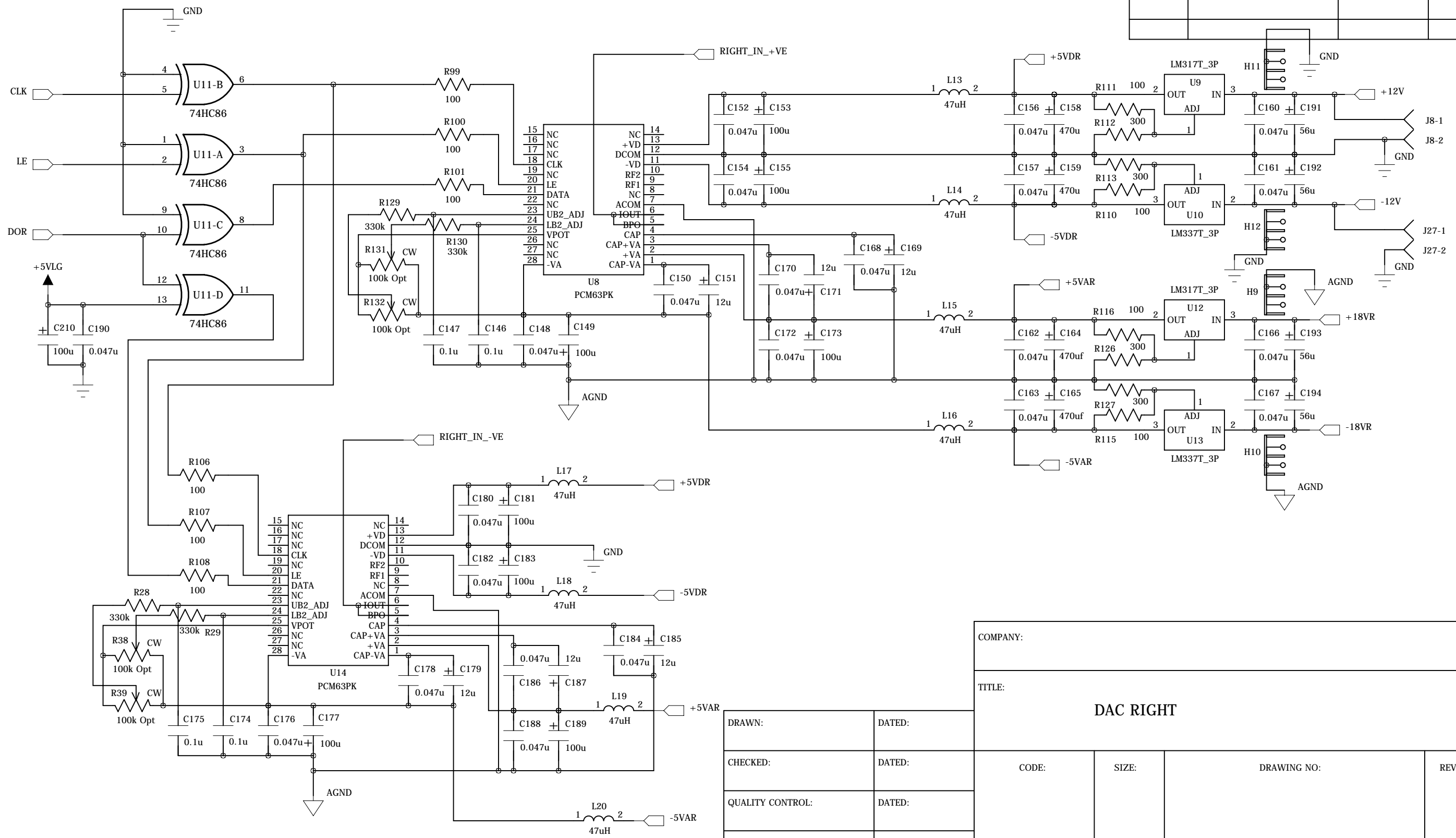
C

B

B

A

A



COMPANY:			
TITLE: DAC RIGHT			
CODE:	SIZE:	DRAWING NO:	REV:
SCALE:		SHEET: OF 6	

DRAWN:	DATED:
CHECKED:	DATED:
QUALITY CONTROL:	DATED:
RELEASED:	DATED:

6

5

4

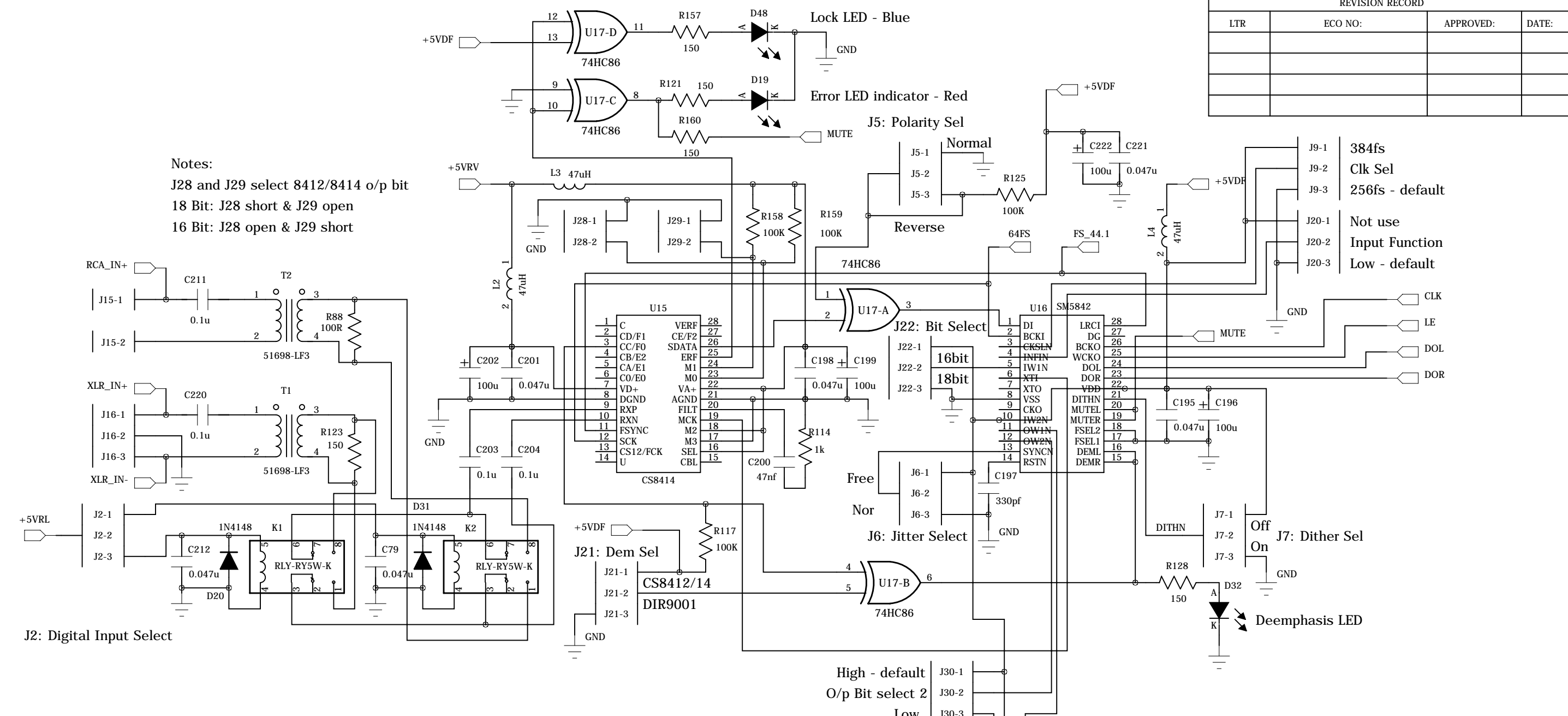
3

2

1

REVISION RECORD			
LTR	ECO NO:	APPROVED:	DATE:

Notes:
 J28 and J29 select 8412/8414 o/p bit
 18 Bit: J28 short & J29 open
 16 Bit: J28 open & J29 short



J2: Digital Input Select

J21: Dem Sel
 J21-1 CS8412/14
 J21-2 DIR9001
 J21-3

High - default
 O/p Bit select 2
 Low
 20bit
 High
 O/p bit select 1
 Low - default

J9-1 384fs
 J9-2 Clk Sel
 J9-3 256fs - default
 J20-1 Not use
 J20-2 Input Function
 J20-3 Low - default

COMPANY:			
TITLE: RECEIVER & DIGITAL FILTER			
DRAWN:	DATED:	CODE:	SIZE:
CHECKED:	DATED:	DRAWING NO:	
QUALITY CONTROL:	DATED:	REV:	
RELEASED:	DATED:	SCALE:	SHEET: OF 7

6

5

4

3

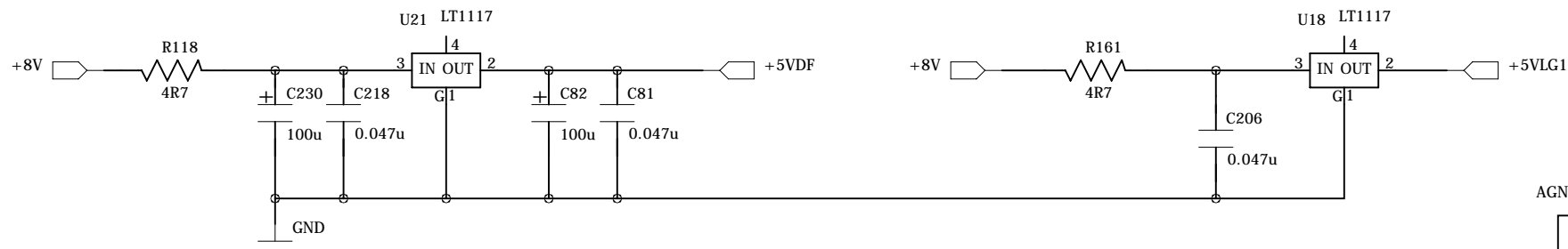
2

1

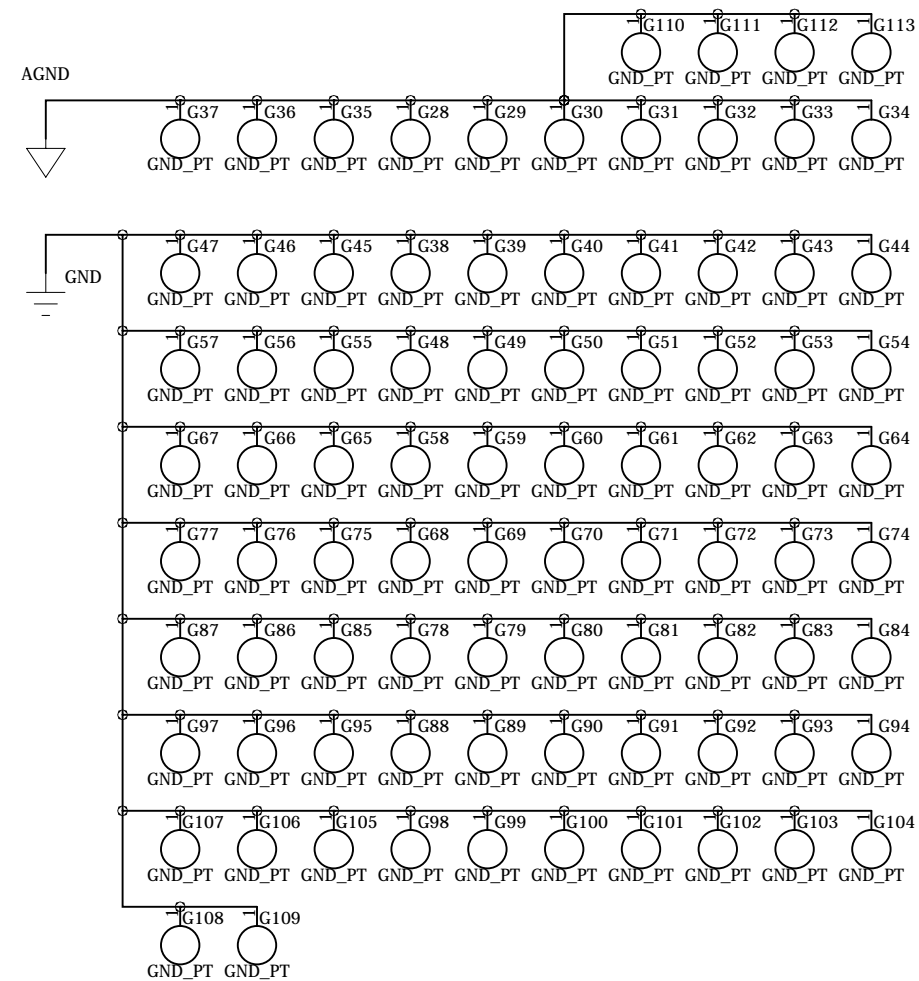
REVISION RECORD			
LTR	ECO NO:	APPROVED:	DATE:

D

D

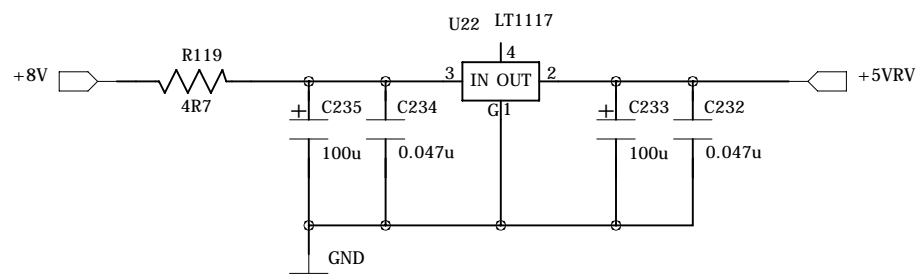


Analogy Ground and Digital Ground Via holes



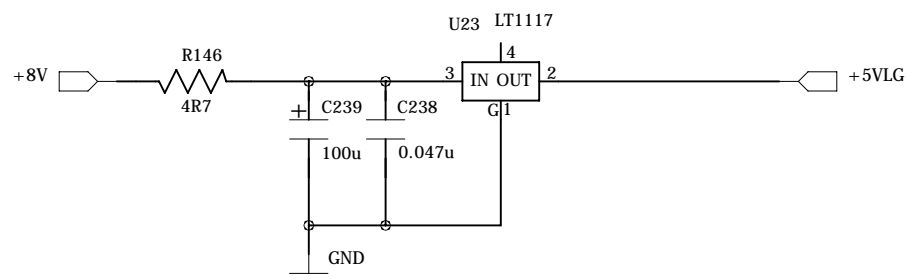
C

C



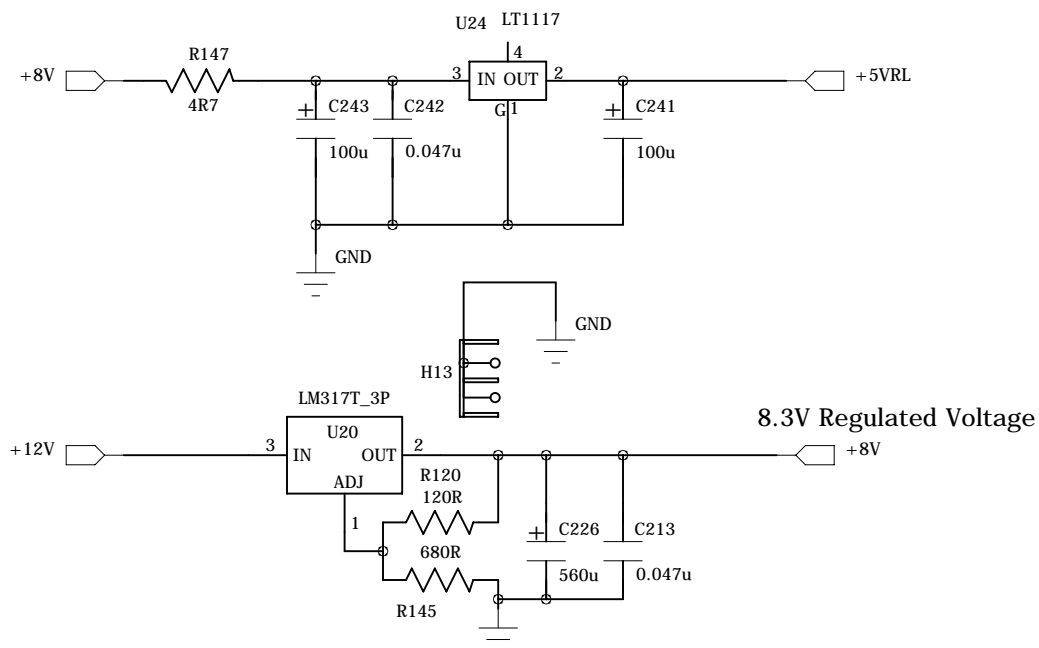
B

B



A

A



COMPANY:			
TITLE: Digital Supply and pre-regulator			
CODE:	SIZE:	DRAWING NO:	REV:
SCALE:			SHEET: OF 9

DRAWN:	DATED:
CHECKED:	DATED:
QUALITY CONTROL:	DATED:
RELEASED:	DATED:

6

5

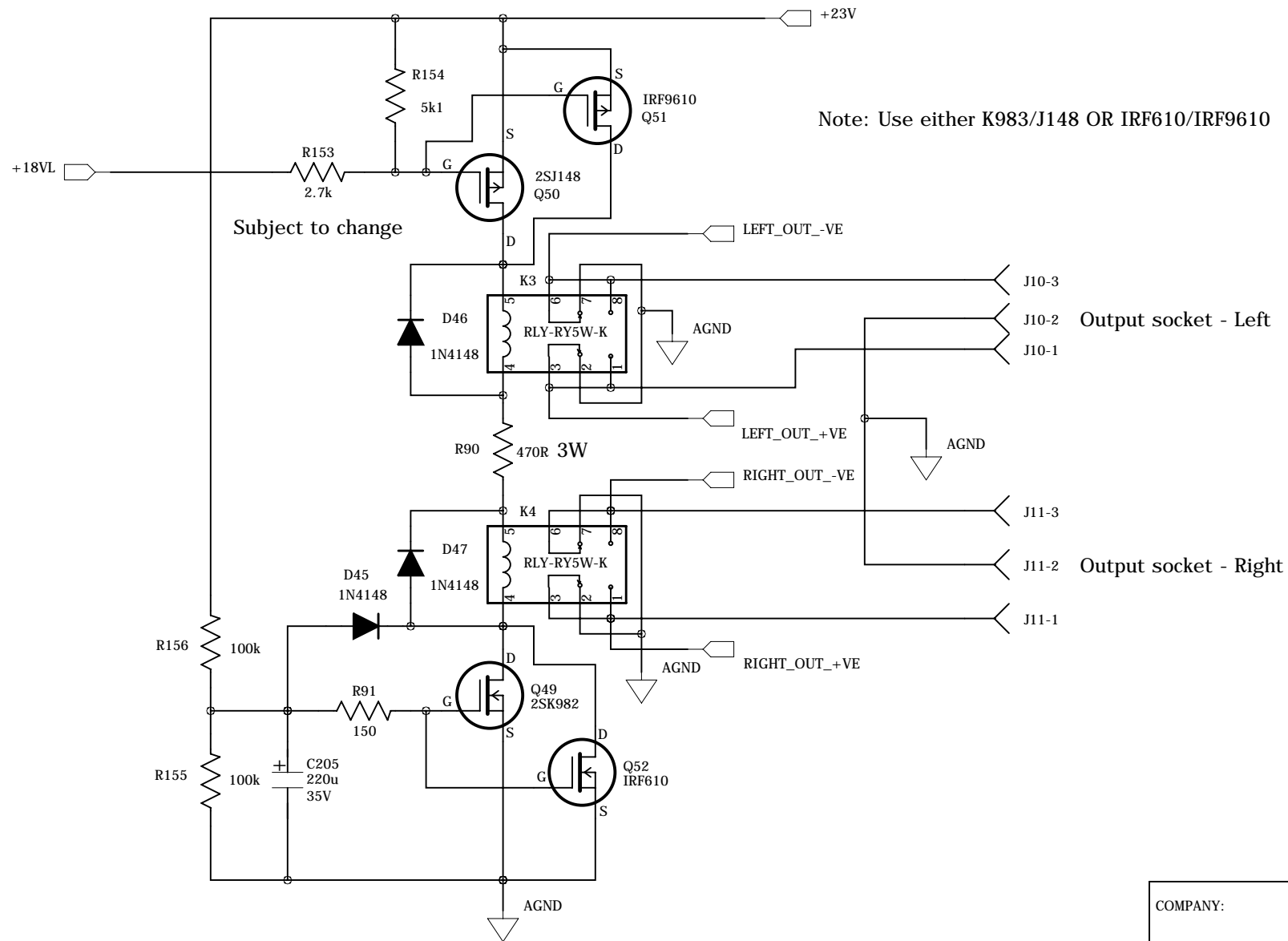
4

3

2

1

REVISION RECORD			
LTR	ECO NO:	APPROVED:	DATE:



Note: Use either K983/J148 OR IRF610/IRF9610

Subject to change

Output socket - Left

Output socket - Right

COMPANY:

TITLE:
Output Delay and Mute

DRAWN:	DATED:
CHECKED:	DATED:
QUALITY CONTROL:	DATED:
RELEASED:	DATED:

CODE:	SIZE:	DRAWING NO:	REV:
-------	-------	-------------	------

SCALE: SHEET: OF 10

D

C

B

A

D

C

B

A