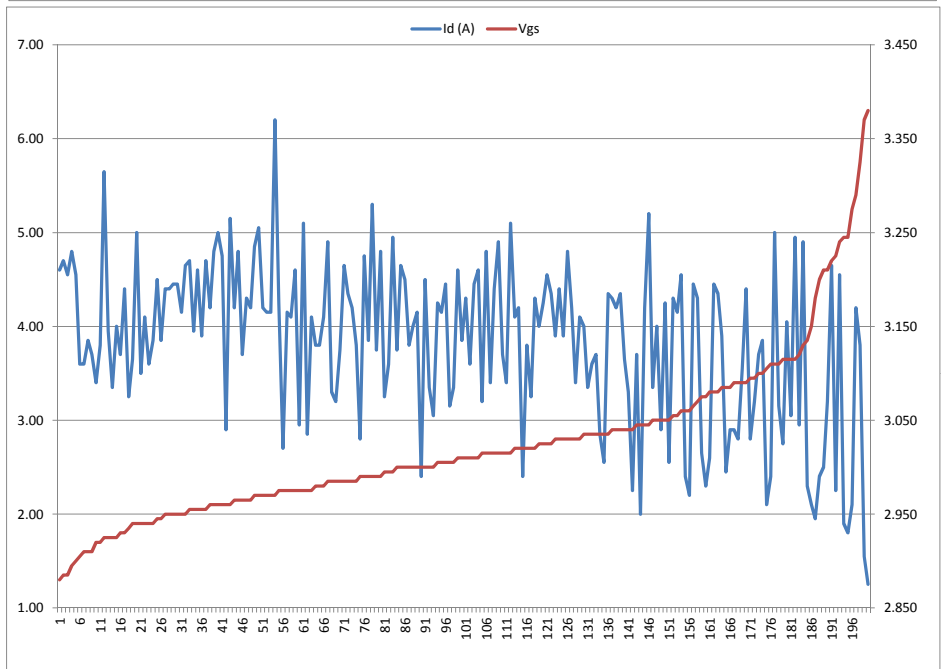
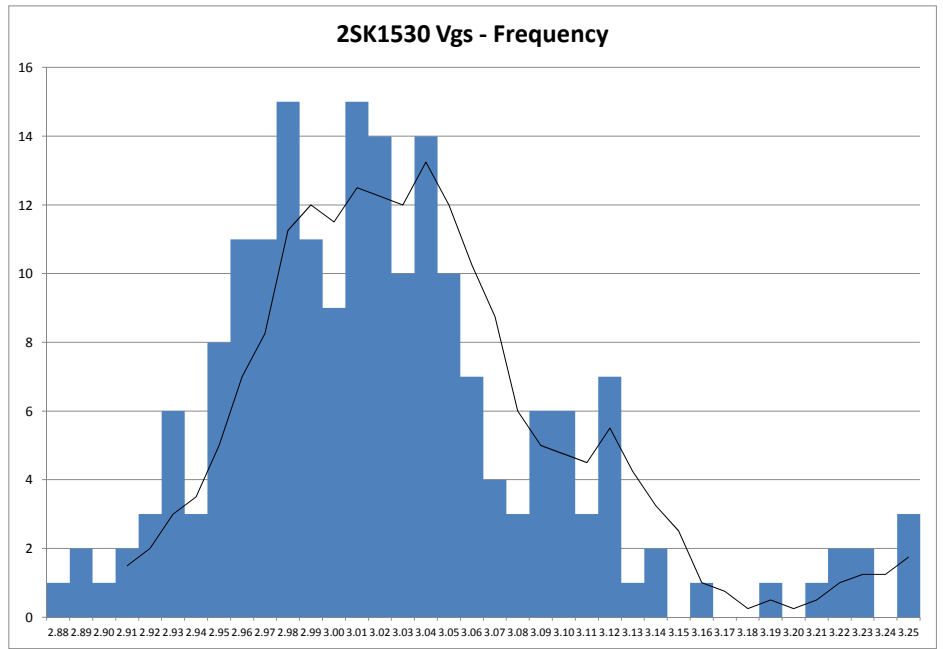


No	Id (A)	Vgs	Bin Group
155	4.60	2.880	A
14	4.70	2.885	B
68	4.55	2.885	B
52	4.80	2.895	C
46	4.55	2.900	D
143	3.60	2.905	D
125	3.60	2.910	E
196	3.85	2.910	E
199	3.70	2.910	E
124	3.40	2.920	F
160	3.80	2.920	F
37	5.65	2.925	F
57	3.95	2.925	F
139	3.35	2.925	F
167	4.00	2.925	F
42	3.70	2.930	G
92	4.40	2.930	G
127	3.25	2.935	G
48	3.65	2.940	H
66	5.00	2.940	H
129	3.50	2.940	H
137	4.10	2.940	H
184	3.60	2.940	H
191	3.85	2.940	H
2	4.50	2.945	H
120	3.85	2.945	H
53	4.40	2.950	I
54	4.40	2.950	I
71	4.45	2.950	I
99	4.45	2.950	I
100	4.15	2.950	I
194	4.65	2.950	I
6	4.70	2.955	I
56	3.95	2.955	I
67	4.60	2.955	I
104	3.90	2.955	I
109	4.70	2.955	I
4	4.20	2.960	J
28	4.80	2.960	J
76	5.00	2.960	J
112	4.75	2.960	J
141	2.90	2.960	J
189	5.15	2.960	J
10	4.20	2.965	J
34	4.80	2.965	J
106	3.70	2.965	J
142	4.30	2.965	J
177	4.20	2.965	J
26	4.85	2.970	K
33	5.05	2.970	K
51	4.20	2.970	K
64	4.15	2.970	K
152	4.15	2.970	K
183	6.20	2.970	K
15	4.25	2.975	K
30	2.70	2.975	K
35	4.15	2.975	K
122	4.10	2.975	K
133	4.60	2.975	K
144	2.95	2.975	K
174	5.10	2.975	K
185	2.85	2.975	K
200	4.10	2.975	K
8	3.80	2.980	L
16	3.80	2.980	L
111	4.10	2.980	L
7	4.90	2.985	L
90	3.30	2.985	L
117	3.20	2.985	L
132	3.75	2.985	L
161	4.65	2.985	L
166	4.35	2.985	L
176	4.20	2.985	L
182	3.80	2.985	L
3	2.80	2.990	M
24	4.75	2.990	M
25	3.85	2.990	M
32	5.30	2.990	M
87	3.75	2.990	M
121	4.80	2.990	M
55	3.25	2.995	M
74	3.60	2.995	M
108	4.95	2.995	M
1	3.75	3.000	N
70	4.65	3.000	N
75	4.50	3.000	N
84	3.80	3.000	N
146	4.00	3.000	N
153	4.15	3.000	N
158	2.40	3.000	N
169	4.50	3.000	N
172	3.35	3.000	N
195	3.05	3.000	N

Bins	Frequency
2.88	1
2.89	2
2.90	1
2.91	2
2.92	3
2.93	6
2.94	3
2.95	8
2.96	11
2.97	11
2.98	15
2.99	11
3.00	9
3.01	15
3.02	14
3.03	10
3.04	14
3.05	10
3.06	7
3.07	4
3.08	3
3.09	6
3.10	6
3.11	3
3.12	7
3.13	1
3.14	2
3.15	0
3.16	1
3.17	0
3.18	0
3.19	1
3.20	0
3.21	1
3.22	2
3.23	2
3.24	0
3.25	3
Count	195



20	4.25	3.005	N
47	4.15	3.005	N
94	4.45	3.005	N
130	3.15	3.005	N
198	3.35	3.005	N
19	4.60	3.010	O
65	3.85	3.010	O
78	4.30	3.010	O
126	3.60	3.010	O
135	4.45	3.010	O
140	4.60	3.010	O
40	3.20	3.015	O
59	4.80	3.015	O
63	3.40	3.015	O
80	4.40	3.015	O
85	4.90	3.015	O
175	3.70	3.015	O
181	3.40	3.015	O
187	5.10	3.015	O
11	4.10	3.020	P
22	4.20	3.020	P
60	2.40	3.020	P
83	3.80	3.020	P
145	3.25	3.020	P
192	4.30	3.020	P
41	4.00	3.025	P
50	4.25	3.025	P
98	4.55	3.025	P
178	4.35	3.025	P
18	3.90	3.030	Q
27	4.40	3.030	Q
44	3.90	3.030	Q
148	4.80	3.030	Q
154	4.20	3.030	Q
157	3.40	3.030	Q
193	4.10	3.030	Q
49	4.00	3.035	Q
102	3.35	3.035	Q
107	3.60	3.035	Q
113	3.70	3.035	Q
136	2.85	3.035	Q
168	2.55	3.035	Q
188	4.35	3.035	Q
5	4.30	3.040	R
9	4.20	3.040	R
82	4.35	3.040	R
88	3.65	3.040	R
171	3.30	3.040	R
190	2.25	3.040	R
86	3.70	3.045	R
103	2.00	3.045	R
105	4.20	3.045	R
164	5.20	3.045	R
101	3.35	3.050	S
115	4.00	3.050	S
123	2.90	3.050	S
180	4.25	3.050	S
197	2.55	3.050	S
134	4.30	3.055	S
156	4.15	3.055	S
61	4.55	3.060	T
110	2.40	3.060	T
179	2.20	3.060	T
93	4.45	3.065	T
43	4.30	3.070	U
12	2.65	3.075	U
138	2.30	3.075	U
62	2.60	3.080	V
72	4.45	3.080	V
95	4.35	3.080	V
13	3.90	3.085	V
81	2.45	3.085	V
170	2.90	3.085	V
45	2.90	3.090	W
96	2.80	3.090	W
159	3.55	3.090	W
162	4.40	3.090	W
39	2.80	3.095	W
77	3.20	3.095	W
17	3.70	3.100	X
29	3.85	3.100	X
97	2.10	3.105	X
79	2.40	3.110	Y
119	5.00	3.110	Y
131	3.15	3.110	Y
36	2.75	3.115	Y
116	4.05	3.115	Y
118	3.05	3.115	Y
186	4.95	3.115	Y
163	2.95	3.120	Z
21	4.90	3.130	1
89	2.30	3.135	1
128	2.10	3.150	2
58	1.95	3.180	3

173	2.40	3.200	4
38	2.50	3.210	5
73	3.20	3.210	5
31	4.65	3.220	6
91	2.25	3.225	6
147	4.55	3.240	7
149	1.90	3.245	7
150	1.80	3.245	7
151	2.10	3.275	8
114	4.20	3.290	9
23	3.80	3.325	10
69	1.55	3.370	11
165	1.25	3.380	12
Max	6.200	3.380	
Min	1.250	2.880	
Range	4.950	0.500	
Average	3.827	3.024	
STD	0.864	0.086	